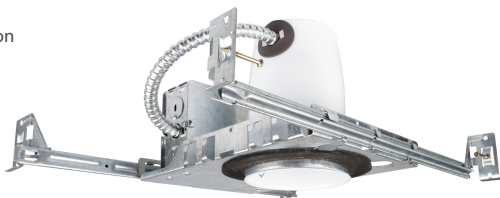


3.5 inch IC GU10_Normal Ver. Housing

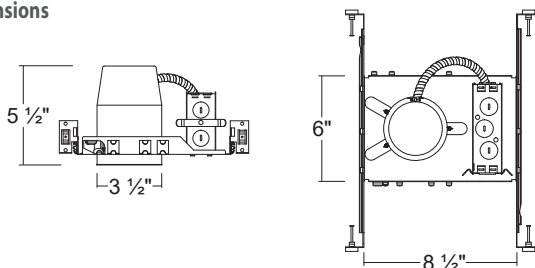
3.5" IC Incandescent New construction & Remodel Housing



H350LGICQA
New construction



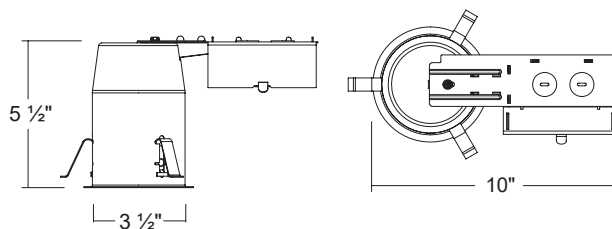
Dimensions



H350LGRICQA
Remodel



Dimensions



SPECIFICATION_H350LGICQA

Plaster Frame

- Galvanized steel construction
- Housing can be removed from plaster frame to provide access to the Junction box

Junction Box

- Listed for through branch circuit wiring
- Contains seven 7/8" knockouts and four Romex pryouts with strain relief

Bar Hanger

- Pre-installed Real nail easily installs in regular lumber, engineered lumber
- Bar Hangers are adjustable from 13-5/8" to 25" and can be repositioned 90 degree on plaster frame

Thermal Protector

- Self resetting thermal protector deactivates fixture if overheating occurs due to improper lamping or misapplied insulation

Lamps

- GU10 LED Max. 10W

Listings

- cULus Listed for Damp Location
- cULus Listed for Feed Through
- Certified under ASTM-E283 for Air tight construction

SPECIFICATION_H350LGRICQA

Junction Box

- Listed for through branch circuit wiring
- Contains one 1-1/8", six 7/8" knockouts and four Romex pryouts with strain relief

Remodel Clips

- Three remodel clips secure housing and accommodates 1/2" and 5/8" ceiling materials.

Thermal Protector

- Self resetting thermal protector deactivates fixture if overheating occurs due to improper lamping or misapplied insulation

Lamps

- GU10 LED Max. 10W

Listings

- cULus Listed for Damp Location
- cULus Listed for Feed Through
- Certified under ASTM-E283 for Air tight construction

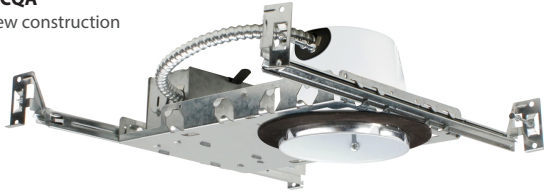


3.5 inch IC GU10_Shallow Ver. Housing

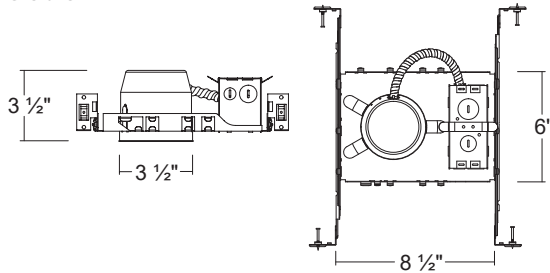
3.5" IC Incandescent Shallow New construction & Remodel Housing



H350LGSICQA
Shallow New construction



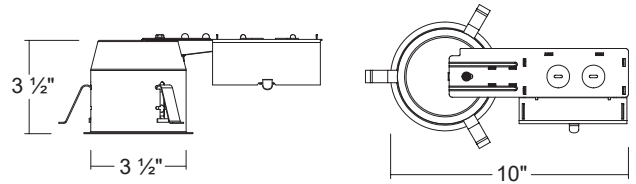
Dimensions



H350LGSRICQA
Shallow Remodel



Dimensions



SPECIFICATION_H350LGSICQA

Plaster Frame

- Galvanized steel construction
- Housing can be removed from plaster frame to provide access to the Junction box

Junction Box

- Listed for through branch circuit wiring
- Contains seven 7/8" knockouts and four Romex pryouts with strain relief

Bar Hanger

- Pre-installed Real nail easily installs in regular lumber, engineered lumber
- Bar Hangers are adjustable from 13-5/8" to 25" and can be repositioned 90 degree on plaster frame

Thermal Protector

- Self resetting thermal protector deactivates fixture if overheating occurs due to improper lamping or misapplied insulation

Lamps

- GU10 LED Max. 10W

Listings

- cULus Listed for Damp Location
- cULus Listed for Feed Through
- Certified under ASTM-E283 for Air tight construction

SPECIFICATION_H350LGSRICQA

Junction Box

- Listed for through branch circuit wiring
- Contains one 1-1/8", six 7/8" knockouts and four Romex pryouts with strain relief

Remodel Clips

- Three remodel clips secure housing and accommodates 1/2" and 5/8" ceiling materials.

Thermal Protector

- Self resetting thermal protector deactivates fixture if overheating occurs due to improper lamping or misapplied insulation

Lamps

- GU10 LED Max. 10W

Listings

- cULus Listed for Damp Location
- cULus Listed for Feed Through
- Certified under ASTM-E283 for Air tight construction